

**Spring Weekends**

**Men's #50**

**March 20-23, 2014**

**Ben Wilds, Rector**

**Women's #50**

**April 3-6, 2014**

**Jo Arrington, Rector**

**Fall Weekends**

**Men's #51**

**October 2-5, 2014**

**Jim Arrington, Rector**

**Women's #51**

**October 16-19, 2014**

**Lillian Arrington, Rector**



**March 2014**

## Equipped to Fulfill God's Calling

Our heavenly Father is looking for men and women who will dedicate themselves to His kingdom work. He seeks people willing to accept responsibility and carry out His "assignments" to completion.

The Lord commended Moses because he persevered in faith to fulfill the divine calling on his life. Chosen to lead the Hebrew slaves out of Egyptian bondage, Moses initially reacted by questioning, "Who am I, that I should go to Pharaoh?" (Ex. 3:11). But God assured him, "Certainly I will be with you" (v. 12). His presence was a key part of Moses' equipping as a leader. And the Lord's response to us is the same. We can confidently accept the responsibility God gives us—whether it's for leadership or some other role—because He has promised to be with us always (Matt. 28:20).

However, Moses wondered whether the Hebrew people would listen to him. He had been away from Egypt for a long time, and his last interaction with the Israelites had been a negative one (Ex. 2:11-14). What kind of influence could he have? God revealed that the only credential Moses needed to give them was that he was sent by God—the I AM (Ex. 3:14). When the Lord gives us a task, He will bestow the spiritual authority we need to carry it out. In addition, God gave Moses a helper—his brother Aaron. Our heavenly Father will also provide us with the people necessary to fulfill His plan.

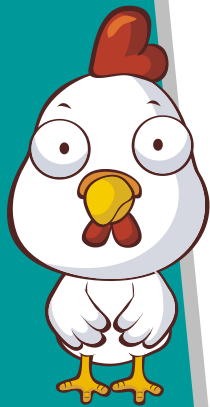
God has promised to equip us for His work. What is your response when asked to serve?



# Men's Victory Breakfast

April 5th  
8:00 am

First Baptist Church  
of Lloyd  
124 St. Louis Street  
Lloyd, FL 32337



## PALANCA

Below are Palanca Numbers for North Florida Tres Dias Weekends.

The guidelines listed below include best estimate (~) and suggested numbers (#) in case of breakage and are the same for both men and ladies weekends.

Bed • Candidates ~36 (40) = variable based on candidate size

Kitchen • Everyone ~ (140 -150) = variable based on team size

Team ~ (100 -110) = variable based on team size

Tables • Bulk 8 (9 -10) = 6 Tables + SD + Rector

Tables • Individual ~48 (50+) = Candidates & Professors

Rollo Room ~52 (55+) = Tables + SD + Rector

## International Secretariat Is Coming to Tallahassee

Looking for a Servant's Heart to help host the International Secretariat Meeting to be held On March 13, 14, and 15, 2015.

Need volunteers to be on the planning committee, which will meet monthly to plan for lodging, meals, transportation, and entertainment.

If you are interested Please contact Doug Kirk,  
NFTD Chairman @ 850-339-2963



Spring 2014  
**Send-Off**  
Sign-In Begins at 5:10pm

**MEN • THURSDAY • MARCH 20 • 5:30PM**  
**WOMEN • THURSDAY • APRIL 3 • 5:30PM**

Freedom Church • First Assembly  
2801 Thomasville Road • Tallahassee, FL

COMMUNITY  
PRAYER &  
COMMUNION  
AFTER THE  
CANDIDATES  
LEAVE FOR THE  
CAMPGROUND

